



Salish Coast Elementary Curated Collection



arts.wa.gov

ArtsWA Art in Public Places

Curated by Lele Barnett

Installed August, 2020

Table of Contents

About ArtsWA Art in Public Places2
About this Curated Project3
Curator Statement 4

Artists in the Curated Collection:

- Andy Arkley5
- Counsel Langley7
- Maria Coryell-Martin.....10
- Stallman Studio..... 11

Installation images 13

ArtsWA contact information19
Image credit 19

About ArtsWA Art in Public Places

Vision Statement

Art in Public Places is uniquely positioned to advance and support art and artists across Washington. Our goal is to build and care for a dynamic contemporary art collection that is accessible and valued. We seek impactful and lasting artworks that reflect Washington's diverse communities.

State Art Collection

In July 1974, the Washington State Legislature established the Art in Public Places program (AIPP) of the Washington State Arts Commission (ArtsWA). The AIPP program oversees the care and administration of the State Art Collection.

Washington is one of the few states that place public art in public schools. The State Art Collection includes nearly 5,000 artworks. These artworks are located where people study, work, and live. The public selects and owns the Collection. Artwork is found in state agencies, public schools, universities, and community colleges.

Curated Projects

Curated projects are a method of acquiring pre-existing artworks for the State Art Collection. Curators are selected from the Curator Roster, a pre-qualified list of people available to research and recommend artworks for purchase. The curator helps ensure that artworks purchased are relevant to both the community context and the physical environment, and reflects Washington's diverse population.

About this Curated Project

Curator | Lele Barnett

ArtsWA Curated Projects Coordinator | Valerie Peterman

Art Selection Committee

- Xep Campbell, Parent representative and community artist
- Lisa Condran, Principal, Salish Coast Elementary
- Catherine Kapp, Community artist
- Wanda LeClerc, Art Teacher, Salish Coast Elementary
- Elise O'Hara, Student representative
- Nicole O'Hara, Parent representative

The funding for this project was made possible by an OSPI K-3 Class Size Reduction Grant, which funded the construction of Salish Coast Elementary School.

Port Townsend School District and Salish Coast Elementary selected the members of their Art Selection Committee for a four-meeting process. Together they selected artworks for their school. The committee first met with ArtsWA Curated Projects Coordinator Valerie Peterman in November, 2019. They discussed Salish Coast's community context, audience, and location opportunities for artworks. With this information in mind, they selected Lele Barnett from the ArtsWA Curator Roster to research and recommend artworks.

Lele met with the Committee and Valerie to refine the committee's criteria and to view the school. Lele then researched potential artworks that responded to the ideas and values shared by the committee. She presented a total of 17 artworks by 6 different artists. The Committee selected 8 artworks by 4 artists to be placed in locations around the school.

The artworks were installed in August, 2020.

Curator Statement

By Lele Barnett

Curating for Salish Coast Elementary School, I collaborated with ArtsWA and the school's art committee, which included student representatives, the principal, teachers, parents, and volunteers. From them I learned this is not only a special space for students, it is a public library, YMCA, and an active town gathering place. The city of Port Townsend has always been considered an art community, and the school values place-based learning. Getting the students and community excited about artists in and from their region was important. They also requested fun and dramatic art that is colorful enough to brighten grey-sky days.

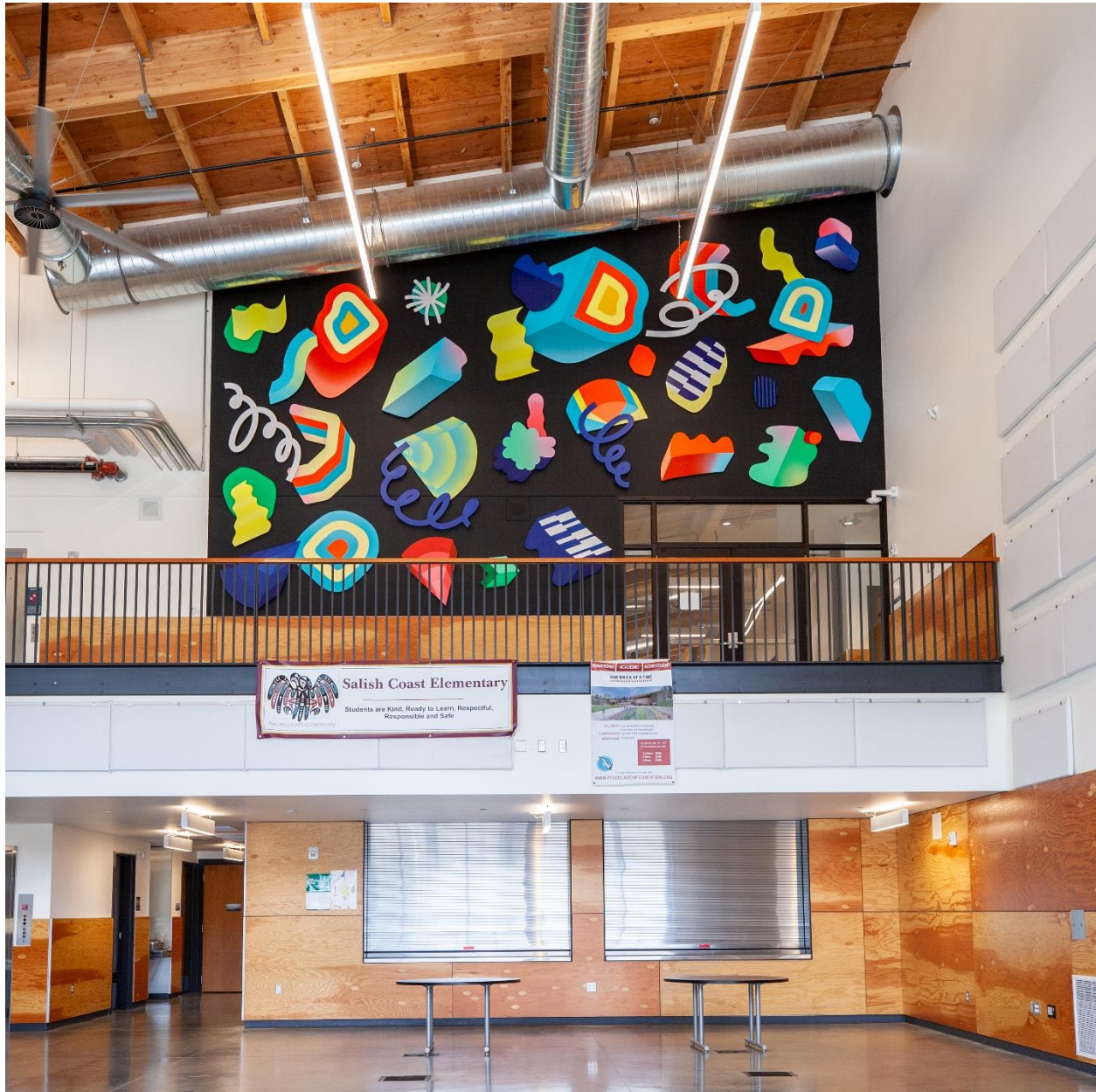
For the common area, we found just that. Andy Arkley, an artist from Bellingham and Seattle, had been exhibiting "Chromamotion" at the Bellevue Arts Museum. This large-scale installation piece evokes excitement and vibrancy, and we are fortunate to place it permanently at Salish Coast Elementary School.

Stallman Studio is an artist duo, Jason Hallman and Stephen Stum, based nearby on Whidbey Island. The two selected works pioneer an innovative technique using paint and canvas as sculpture. They believe color is therapy, and in these works fields of color emerge as your perspective to the piece changes.

Counsel Langley attended Salish Coast Elementary School, back when it was called Grant Street School. Growing up in Port Townsend inspires her work, and these four paintings radiate positivity.

Maria Coryell-Martin is a local artist who lives on the same street as the school! Her powerful imagery is based on field art and science, and her painting of Arctic Terns inspires learning about our global environment.

Andy Arkley



Chromamotion, 2018

Birch plywood and acrylic

34 components, 14 ft x 20 ft x 2 in overall installation

Andy Arkley

American, born 1970

Andy Arkley creates vivid sculptural installations and interactive artworks that often combine or are influenced by his work as a designer, musician, and animator.

He received a Bachelor of Arts degree from The Evergreen State College. He has been awarded grants from 4Culture and Artist Trust. He was selected as one of the lead artists for the 2020 Experience at Ahha, Tulsa, Oklahoma. He is a member of the sound collage band, The Bran Flakes.

Artist Statement

"I strive to make work that fosters inclusion, positivity and elation. Some of my work combines sculpture, light, music, animation, and interactivity, while other projects are static installations. My interactive pieces encourage creative collaboration between strangers, while my static installations use brightly colored, simple forms that are meant to invoke movement and a sense of joy about being alive."

Counsel Langley



Arcade, 2020

Acrylic, paper, sequins, ink, & glitter on canvas

36 in x 36 in



A Place for Wild Things, 2020

Acrylic, paper, & glitter on canvas

36 in x 36 in



Sunset Projector, 2020

Acrylic, paper, ink, & glitter on canvas

40 in x 30 in



A Time to Be a Star/A Time to Gaze at Stars, 2020

Acrylic, paper, ink, & glitter on canvas

40 in x 30 in

Counsel Langley

American, born 1973

Anchorage, Alaska-based artist and educator Counsel Langley makes mixed-media artworks using a variety of materials. She grew up in Port Townsend, Washington, and was influenced by its maritime history and the traditions and materials of its shipwrights and foundry workers. Outer space, rock-n-roll, and science fiction are among several references in her imagery.

She received a Bachelor of Fine Arts degree in Metals at Massachusetts College of Art and Design in Boston, Massachusetts.

Artist Statement

“Making artwork helps me think about being human, the things we do, feel, and how we interact with the world. Usually an idea or story guides me as I make a piece--it lets me know what colors and shapes to use. We are complex, both as individuals and in our groups, so sometimes these stories are hard and contain our mistakes, our bad habits. And, often it reflects our creativity, our desire to connect, and our potential for big heartedness. Usually, there is some of both and because of our ability to self-reflect, learn, and change there is always a foundation of hope and empathy. In these new pieces I have focused on some wonderful things: Our need for play. The way we sometimes want to be the center of attention and other times we want to be alone. And how we all deserve both. The way being quiet in nature--out in the woods, gazing up at the stars, watching the shifting colors of a brilliant sunset--helps us feel okay even in difficult times. And, those times we have the grace to step aside and give space for wild things to do the same.”

Maria Coryell-Martin



Following the Light: Day (Arctic Terns), 2012

Watercolor on Arches cold-press paper

33 in x 33 in

Maria Coryell-Martin

American, born 1982

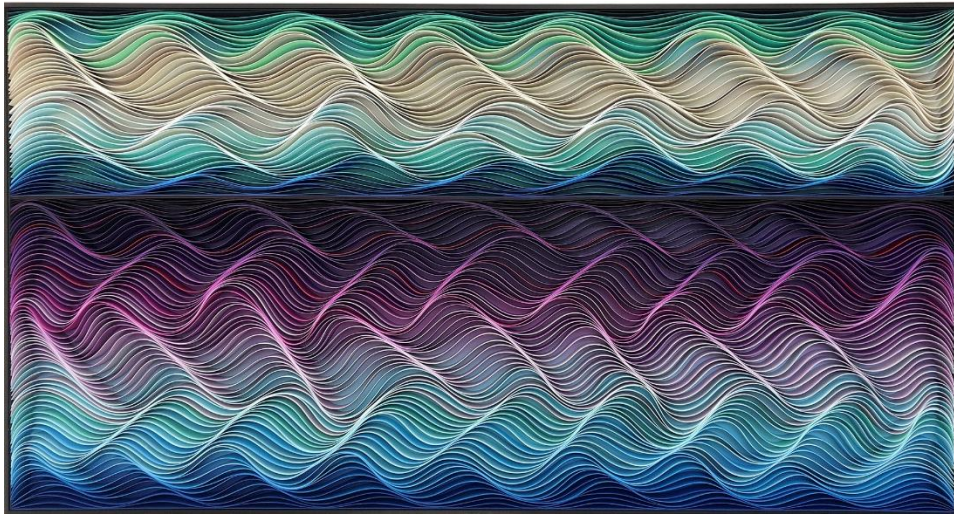
Maria Coryell-Martin is a Port Townsend-based artist. Her work is part of a tradition of travelling artists, naturalists, and educators. She sketches and takes recordings in the field to capture polar and glaciated landscapes. Her work in the field serves to “build my palette of place, a record of experience, climate, and color.” She then returns to her studio and turns her sketches into paintings. She notes, “I believe in art as a tool for exploration, observation, and scientific inquiry.”

She received a degree in studio art from Carleton College. She was awarded a Thomas J. Watson Fellowship after graduation, and explored remote regions around the world through art.

About the artwork

Maria became interested in Arctic terns after observing and sketching them both in the Arctic and Antarctica and learning that they complete an annual migration of 45,000 miles. Traversing countries and continents, these birds are true global citizens—an emblem for climate change awareness and environmental stewardship.

Stallman Studio



Troposphere, 2019

Sculpted canvas and acrylic

42 in x 78 in x 3 in



Taste the Rainbow, 2020

Sculpted canvas and acrylic

2 panels, each 24 in x 72 in x 3 in

Stallman Studio

Jason Hallman | American, born 1972

Stephen Stum | American, born 1981

Whidbey Island-based artists Jason Hallman and Stephen Stum partner together as Stallman Studio. They conceived a technique called “Canvas on Edge” in which they use paint and canvas as sculpture.

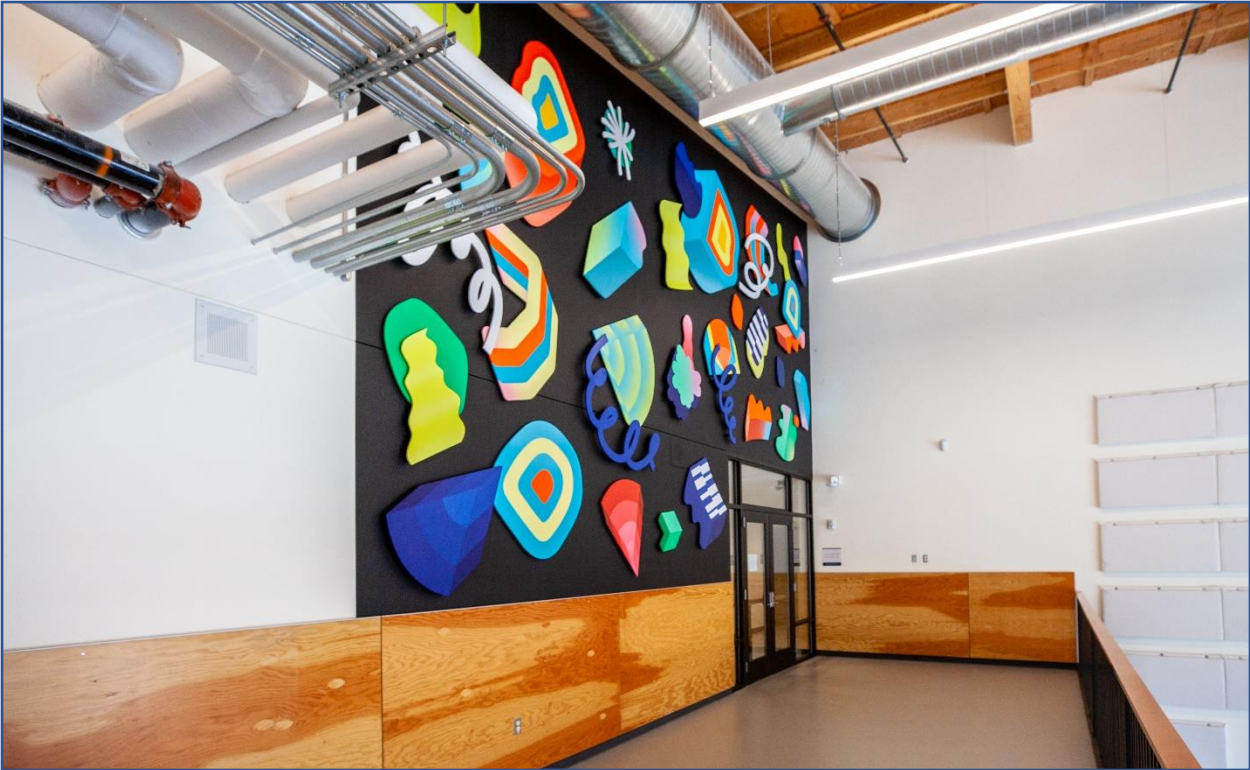
The duo creates together, one acting as the right side of the brain and the other the left. This union of dynamic minds dissolves the boundaries of what is possible turning the ordinary into extraordinary.

About the artworks

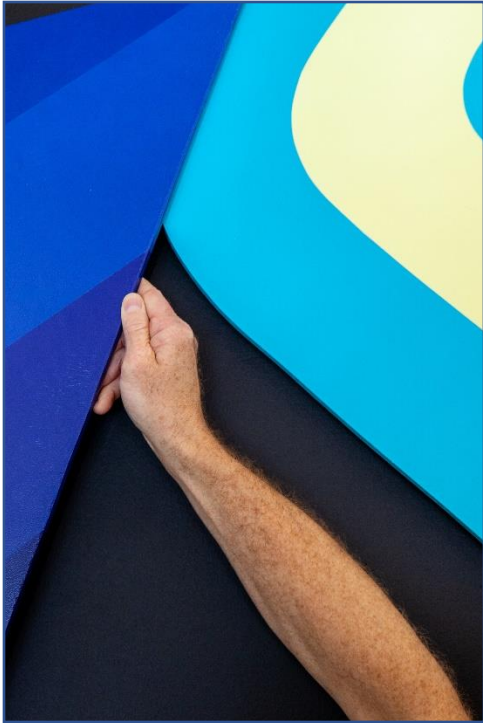
Canvas on Edge is conceived from large sheets of raw canvas measuring 4ft x 100ft, which is then hand-painted and cut. Each articulating segment is uniquely molded and placed on its edge. Just like an artist would seal a painting, each sculpture is sealed using an archival varnish that protects it from moisture and UV light.

The cut edge of the canvas creates an elevated line drawing and when seen at an angle, fields of color emerge as your perspective to the piece changes. The hue of the painted canvas reflects on the background creating a spectrum of color. The sculptures are comprised of curvilinear forms that swirl and flow together, allowing the viewer to get lost in the cellular labyrinth. Each cell plays with light and shadow creating soft transitions and bright highlights.

Installation images

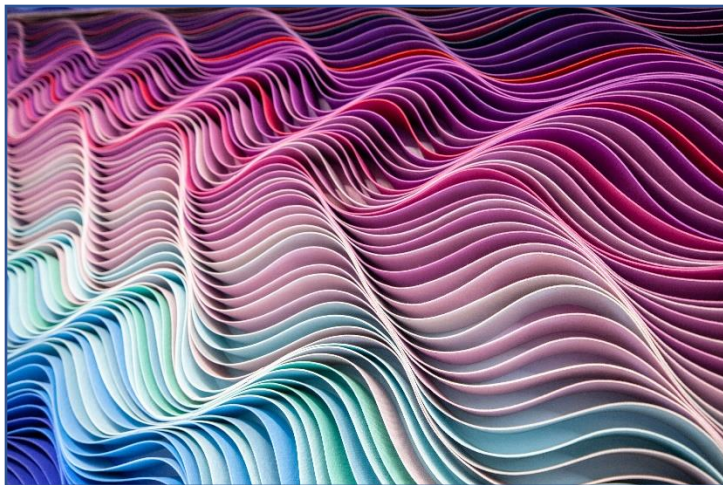
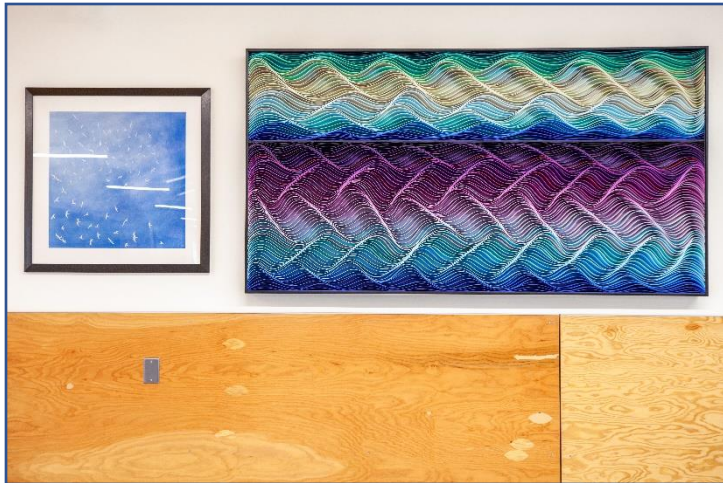
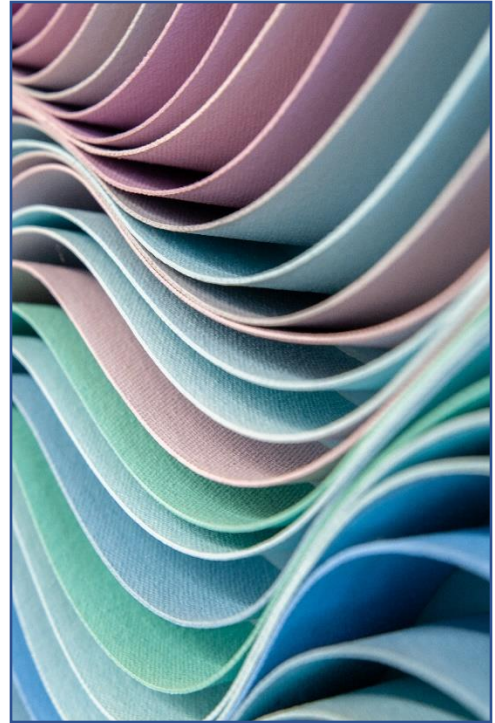


Clockwise from top: Andy Arkley, *Chromamotion*, installed in the common atrium at Salish Coast Elementary. The artist Andy Arkley adjusts one of the components of his installation. Detail of *Chromamotion*.

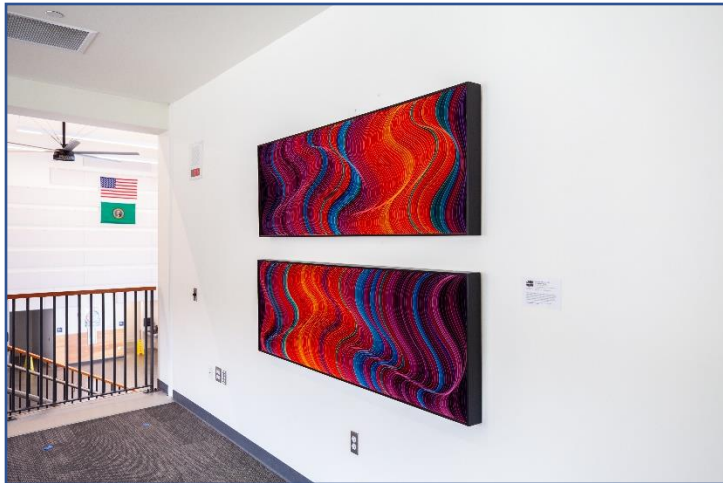
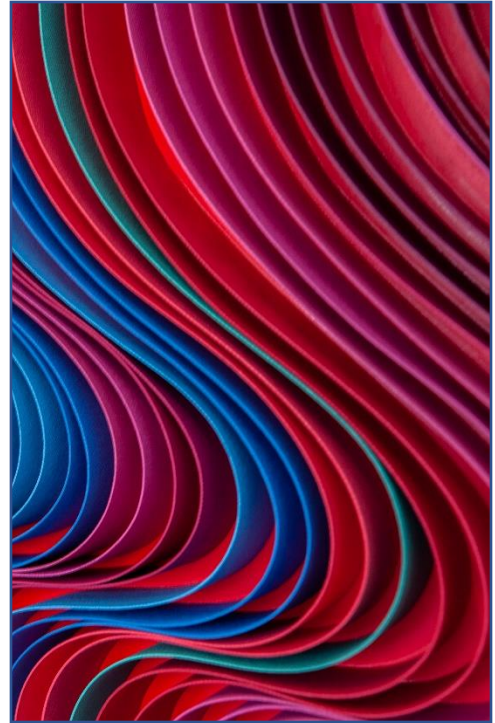
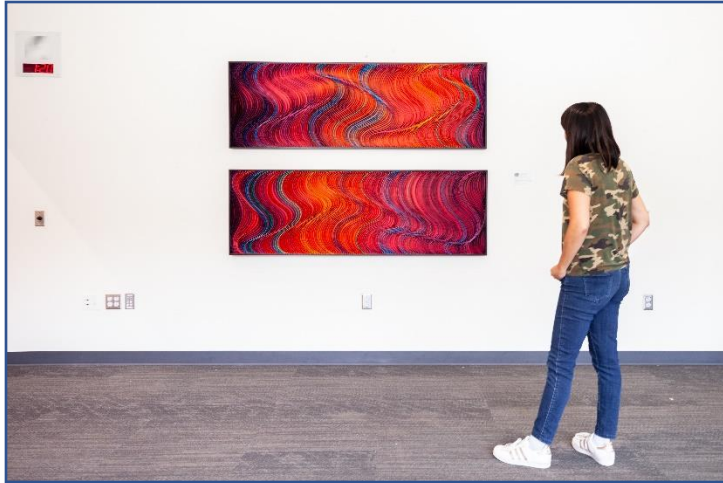


Clockwise from top left: Artist Andy Arkley reaches for one of the components of *Chromamotion*, installed in the common atrium at Salish Coast Elementary. Detail of *Chromamotion*. The overall installation looking up from the first floor of the atrium.

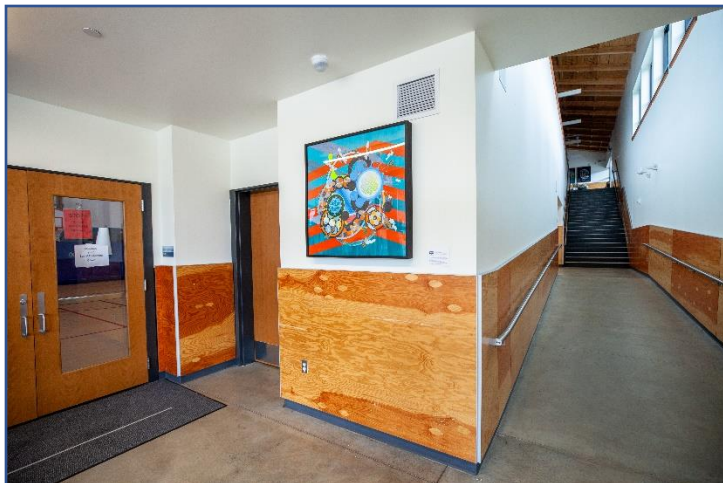
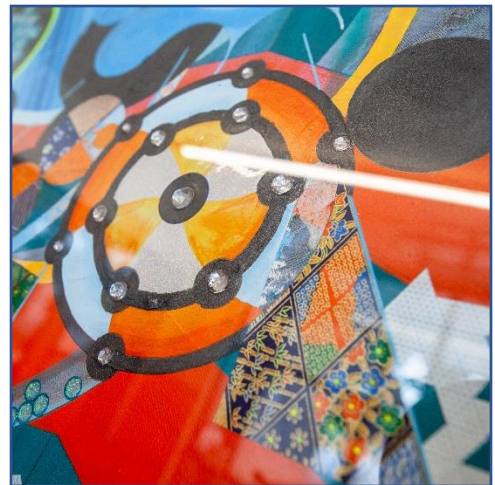
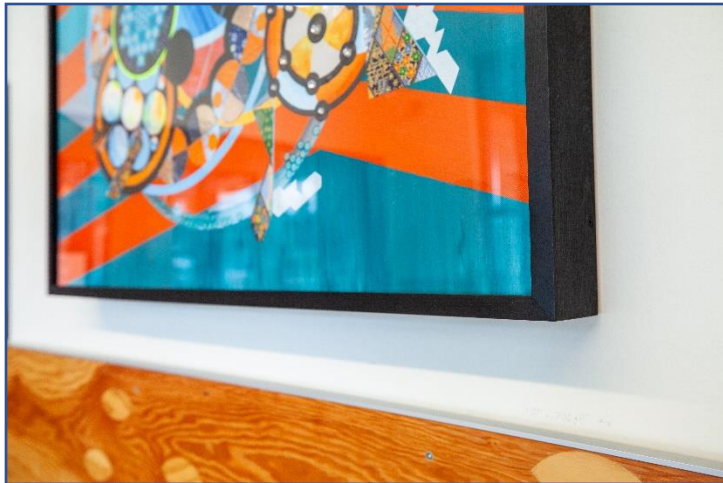




Clockwise from top left: Detail of *Following the Light: Day*, by Maria Coryell-Martin. Detail of *Troposphere* by Stallman Studio. Framed installation of *Following the Light: Day*. Detail of *Troposphere* by Stallman Studio. Installation of *Following the Light: Day* and *Troposphere*.



Clockwise from top left: Installation of *Taste the Rainbow* by Stallman Studio, with curator Lele Barnett. Detail images of *Taste the Rainbow*. Installation of *Taste the Rainbow* looking out over the common atrium.



Clockwise from top left: Installation of *A Place for Wild Things* by Counsel Langley. A detail of *A Place for Wild Things*. Detail of *Arcade* by Counsel Langley. Installation of *Arcade*. Detail of *Arcade*.



Clockwise from top: Counsel Langley, *Sunset Projector* and *A Time to Be a Star/A Time to Gaze at Stars* installed above a seating area. A detail of *Sunset Projector*. A detail of *A Time to Be a Star/A Time to Gaze at Stars*.



WASHINGTON STATE ARTS COMMISSION

ArtsWA contact information

Mike Sweney | Art in Public Places Program Manager

Mike.sweney@arts.wa.gov

C: 360-228-4080

Valerie Peterman | Curated Projects Coordinator

Valerie.peterman@arts.wa.gov

T: 360-252-9986 | C: 206-949-1938

Image credit

In situ images of the artworks installed at Salish Coast Elementary were photographed by Dom Nieri of WISEKNAVE, courtesy of the Washington State Arts Commission. All other artwork images are courtesy of the artists.